

# PVC Pop Up Straight & Curved Media Wall

## Artwork Specifications

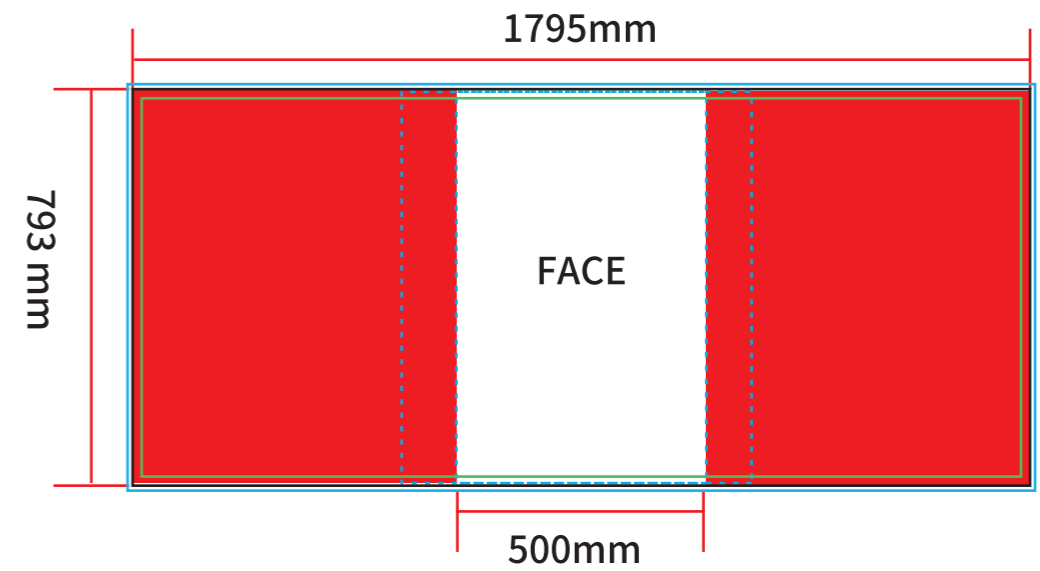
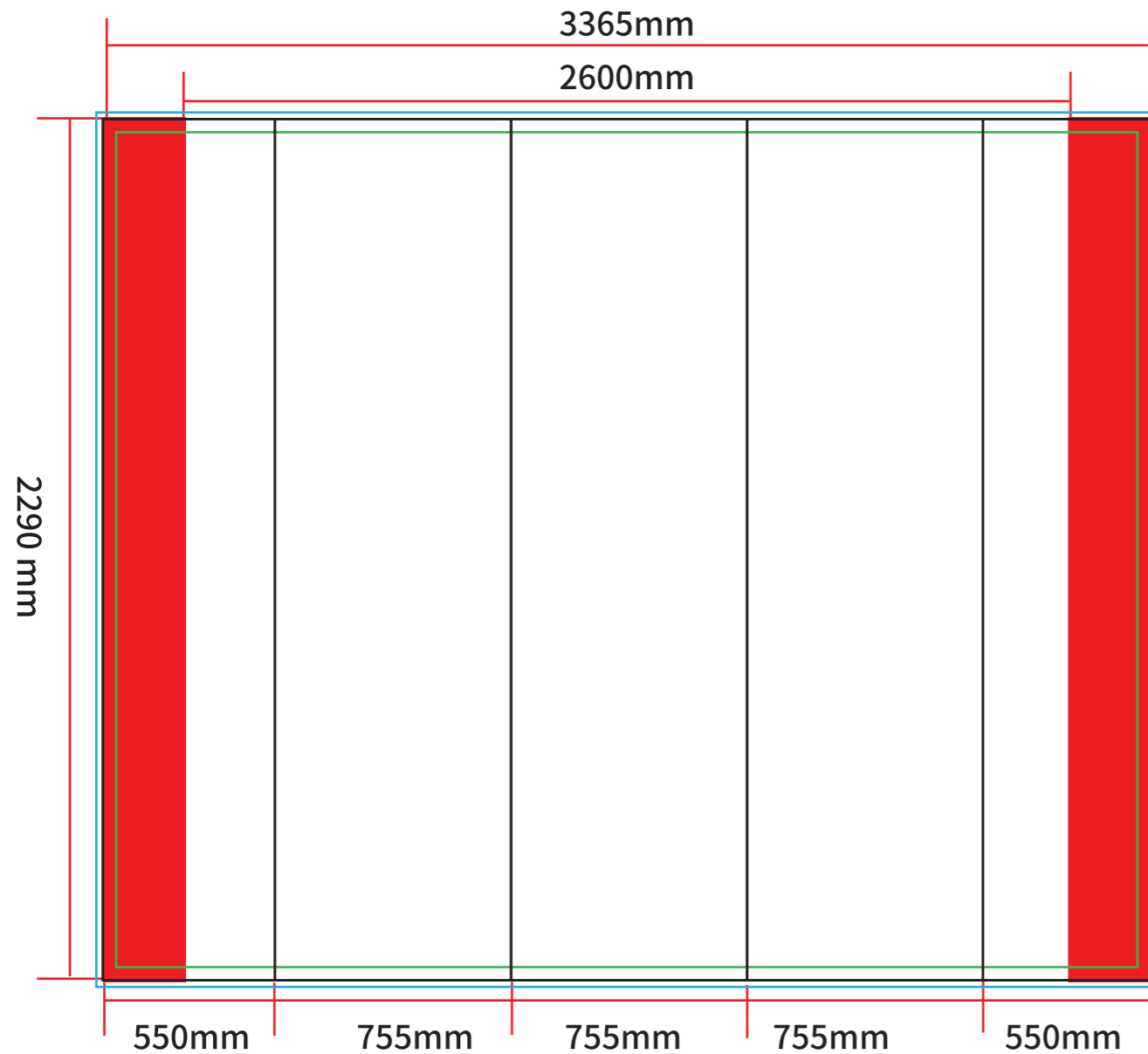
- \* All files to be supplied as PDF file
- \* All files to be set up as four-colour CMYK not RGB colour mode
- \* All fonts must be outlined/converted to paths
- \* All images and elements to be embed without trim, crop and registration marks
- \* All images within the files must be at least 150dpi or better print resolution
- \* Please specify correct proportions if artwork size is not a 100% full size
- \* All bleeding requirements according to templates

## Sending Your Artwork





- \* Email to [artwork@acesign.com.au](mailto:artwork@acesign.com.au) for size less than **20MB**
- \* Please using (Wetransfer, Google Drive or other free services) to upload your files for larger sizes and sent us the download link.
- \* **Please specify your invoice number when sending your files**



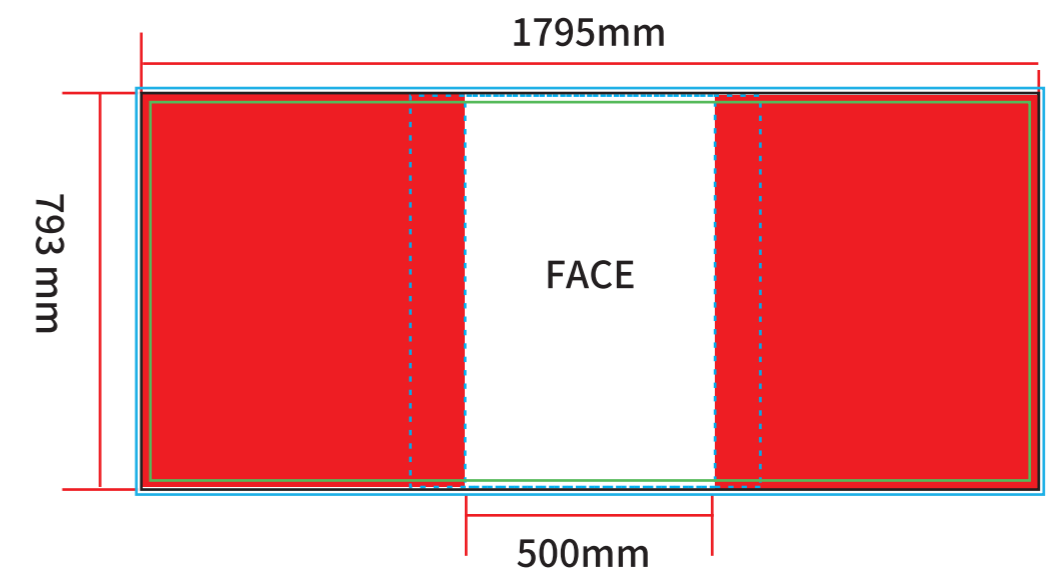
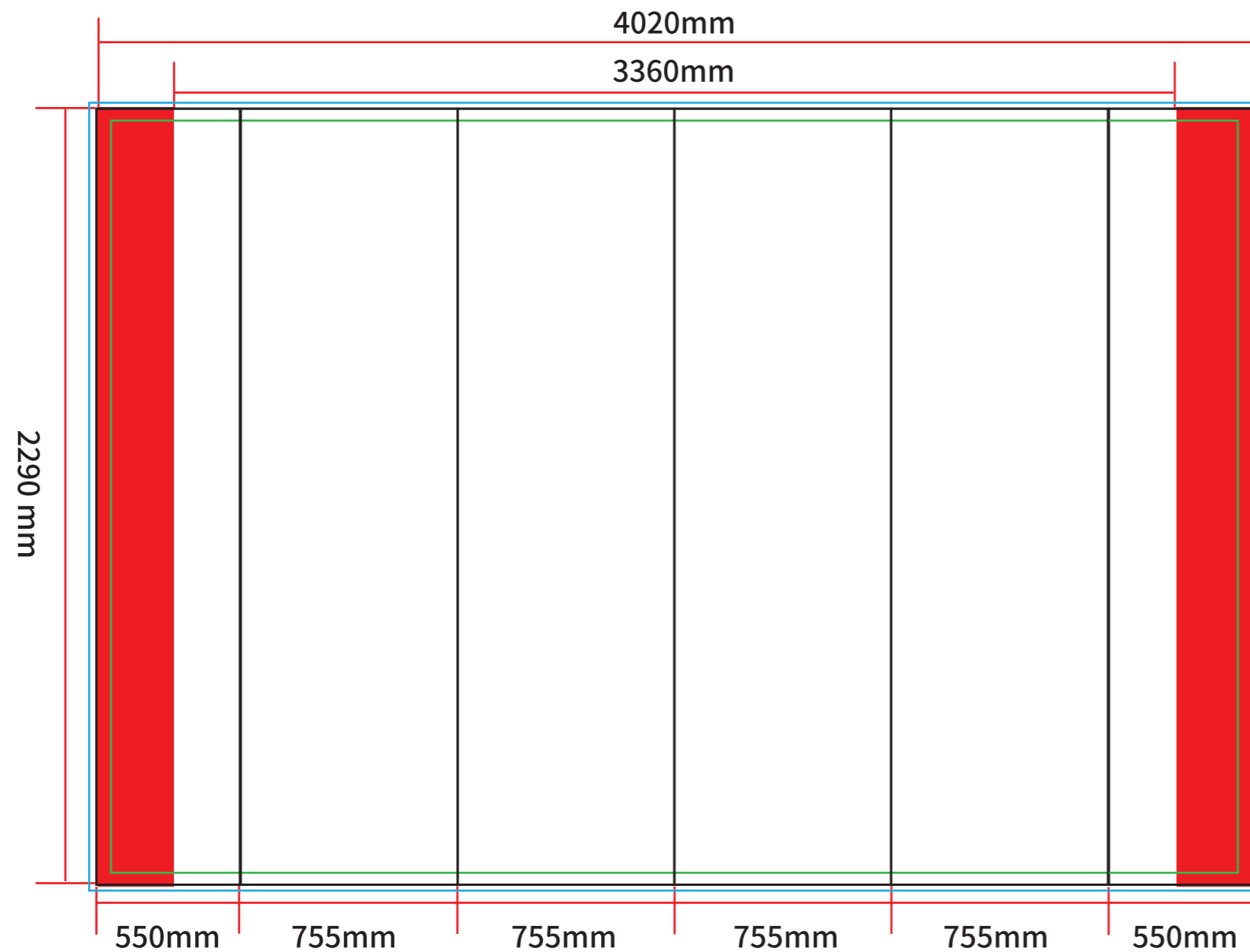
# PVC Pop Up Straight & Curved Media Wall







Optional Hard case Printing

-  10mm Bleeding
-  Finished Area
-  Safe Artwork Area
-  Graphic in this area will not be appearing at the front of your table

# PVC Pop Up Straight & Curved Media Wall



-  10mm Bleeding
-  Finished Area
-  Safe Artwork Area
-  Graphic in this area will not be appearing at the front of your table

Optional Hard case Printing