

# Table Throw (Stretch)

## 6 Foot Stretch 4 Sided Table Throw

### Artwork Specifications

- \* All files to be supplied as PDF file
- \* All files to be set up as four-colour CMYK not RGB colour mode
- \* All fonts must be outlined/converted to paths
- \* All images and elements to be embed without trim, crop and registration marks
- \* All images within the files must be at least 150dpi or better print resolution
- \* Please specify correct proportions if artwork size is not a 100% full size
- \* All bleeding requirements according to templates

### Sending Your Artwork

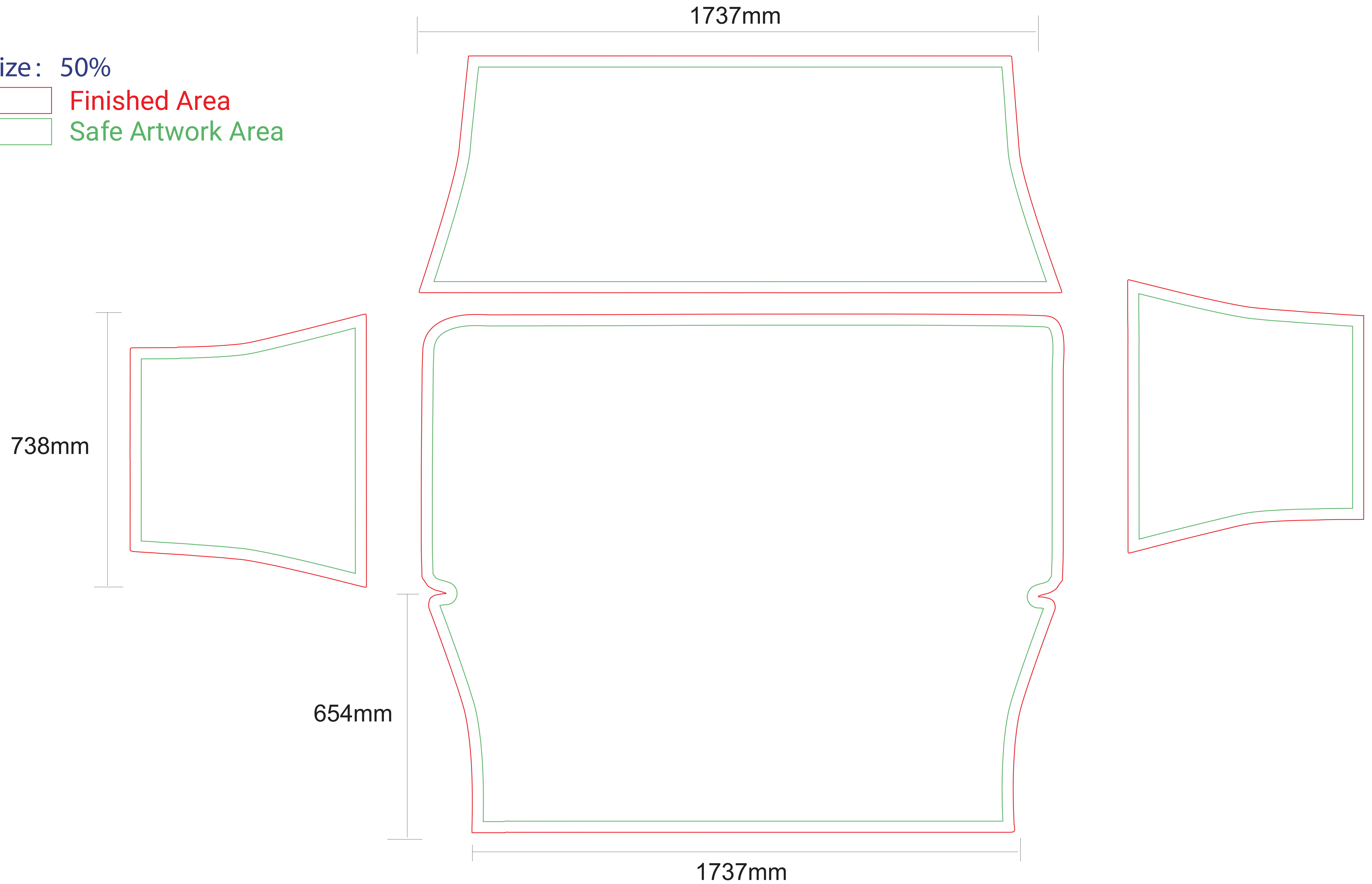
- \* Email to [artwork@acesign.com.au](mailto:artwork@acesign.com.au) for size less than **20MB**
- \* Please using (Wetransfer, Google Drive or other free services) to upload your files for larger sizes and sent us the download link.
- \* **Please specify your invoice number when sending your files**



# 6 Foot Stretch 4 Sided Table Throw

Size: 50%

- Finished Area
- Safe Artwork Area



# Table Throw (Stretch)

## 8 Foot Stretch 4 Sided Table Throw

### Artwork Specifications

- \* All files to be supplied as PDF file
- \* All files to be set up as four-colour CMYK not RGB colour mode
- \* All fonts must be outlined/converted to paths
- \* All images and elements to be embed without trim, crop and registration marks
- \* All images within the files must be at least 150dpi or better print resolution
- \* Please specify correct proportions if artwork size is not a 100% full size
- \* All bleeding requirements according to templates

### Sending Your Artwork

- \* Email to [artwork@acesign.com.au](mailto:artwork@acesign.com.au) for size less than **20MB**
- \* Please using (Wetransfer, Google Drive or other free services) to upload your files for larger sizes and sent us the download link.
- \* **Please specify your invoice number when sending your files**



# 8 Foot Stretch 4 Sided Table Throw Artwork Template

Size: 50%

- Finished Area
- Safe Artwork Area

